

# UNIQUELY DESIGNED FOR YOUR HOME

## Aritco HomeLift

Datasheet 2025

We know every home is unique, and your home is a special place for you. You have picked every colour, every piece of furniture and every bit of decoration to create a home that is designed for your family, for your life and for your comfort.

Aritco HomeLift is designed to be that extra feature of your home. It is decorative and is a spectacular design feature, which makes your home unique. It provides you with that extra feeling of luxury, and it ignites the full potential of your home.

Accessible online via Aritco SmartLift.

For more information please visit [aritco.com](https://aritco.com)



 **ELEVÁRE**  
CERTIFIED PARTNER OF ARITCO

  
**ARITCO**<sup>TM</sup>

**Elevare Indonesia**

Clon Park 32, Jakarta  
Garden City Boulevard,  
Cakung, Jakarta Timur

**P** : +62 811-800-8012

**E** : [admin@elevareindonesia.com](mailto:admin@elevareindonesia.com)

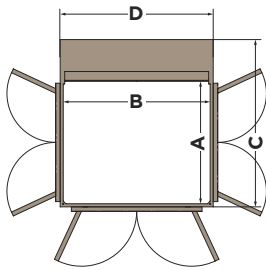
**W** : [elevareindonesia.com](https://elevareindonesia.com)



# Aritco HomeLift

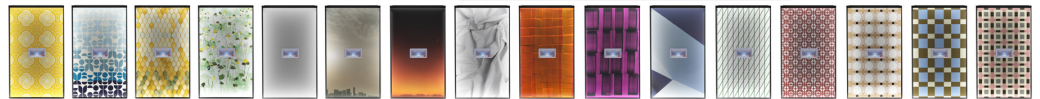
Aritco HomeLift blends refined design with full personalization. From the iconic DesignWall and ambient DesignLight, to elegant glass walls and ceiling patterns — every detail reflects your lifestyle. Choose from curated colors, floorings, and finishes. Powered by SmartLift technology for live updates and remote support, with SmartSafety features for quiet peace.

## Sizes



| SIZE | CARRIER SIZE (AxB) | FINISH SIZE (Cx D) | RATED LOAD      |
|------|--------------------|--------------------|-----------------|
| S5   | 600 X 830 mm       | 966 x 880 mm       | 250 kg / 2 pers |
| S8   | 1 000 x 830 mm     | 1 366 x 880 mm     | 250 kg / 3 pers |
| S9   | 1 100 x 830 mm     | 1 466 x 880 mm     | 250 kg / 3 pers |
| S12  | 1 000 x 1 200 mm   | 1 366 x 1 250 mm   | 400 kg / 5 pers |
| S15  | 1 100 x 1 400 mm   | 1 466 x 1 450 mm   | 400 kg / 5 pers |

## DesignWall™



## Lift colour



## Glass panel



## Floor



**Tehnickal compliance** European Machine Directive 2 006/42/EC | European Standard EN 81-41

**Drive system** Patented screw-and-nut system

**Rated speed** Max 0.30 m/s

**Emergency lowering** Battery-powered

**Travel height** 500 - 18 000 mm

**Number of Floors** 2 - 6 floors

**Installation** Recessed installation 37 mm below floor level / 0 mm with a ramp

**Operation** One-touch operation (press one time)

**Power supply** 230 V 1-phase | 400 V 3-phase

**Warranty** 5-year product warranty and a 10-year drive technology warranty

